



City of
PANAMA CITY
Bigger. Better. Stronger.

Preparing for the unimaginable

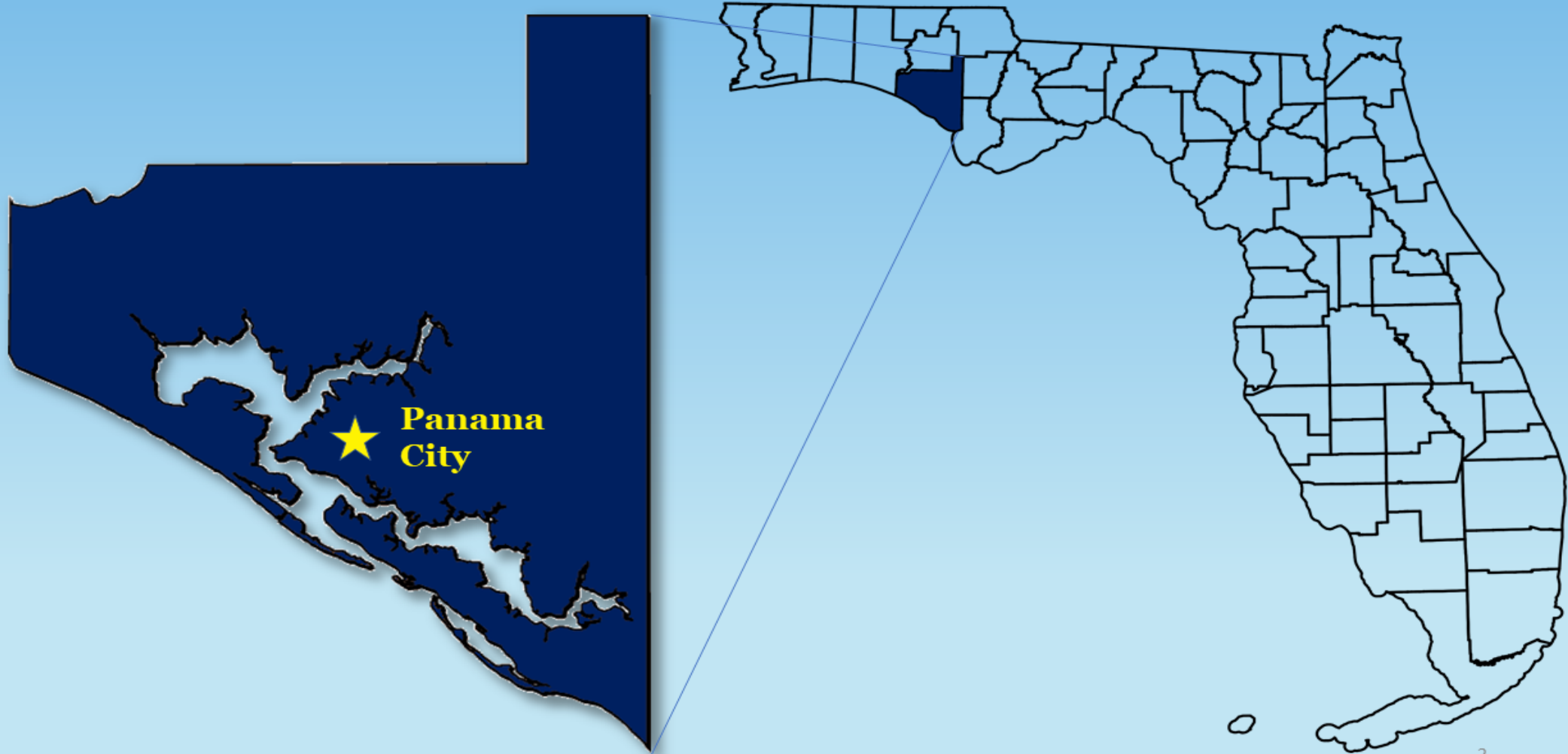
- **The Approach**
- **The Act**
- **The Aftermath**
- **The Advice**

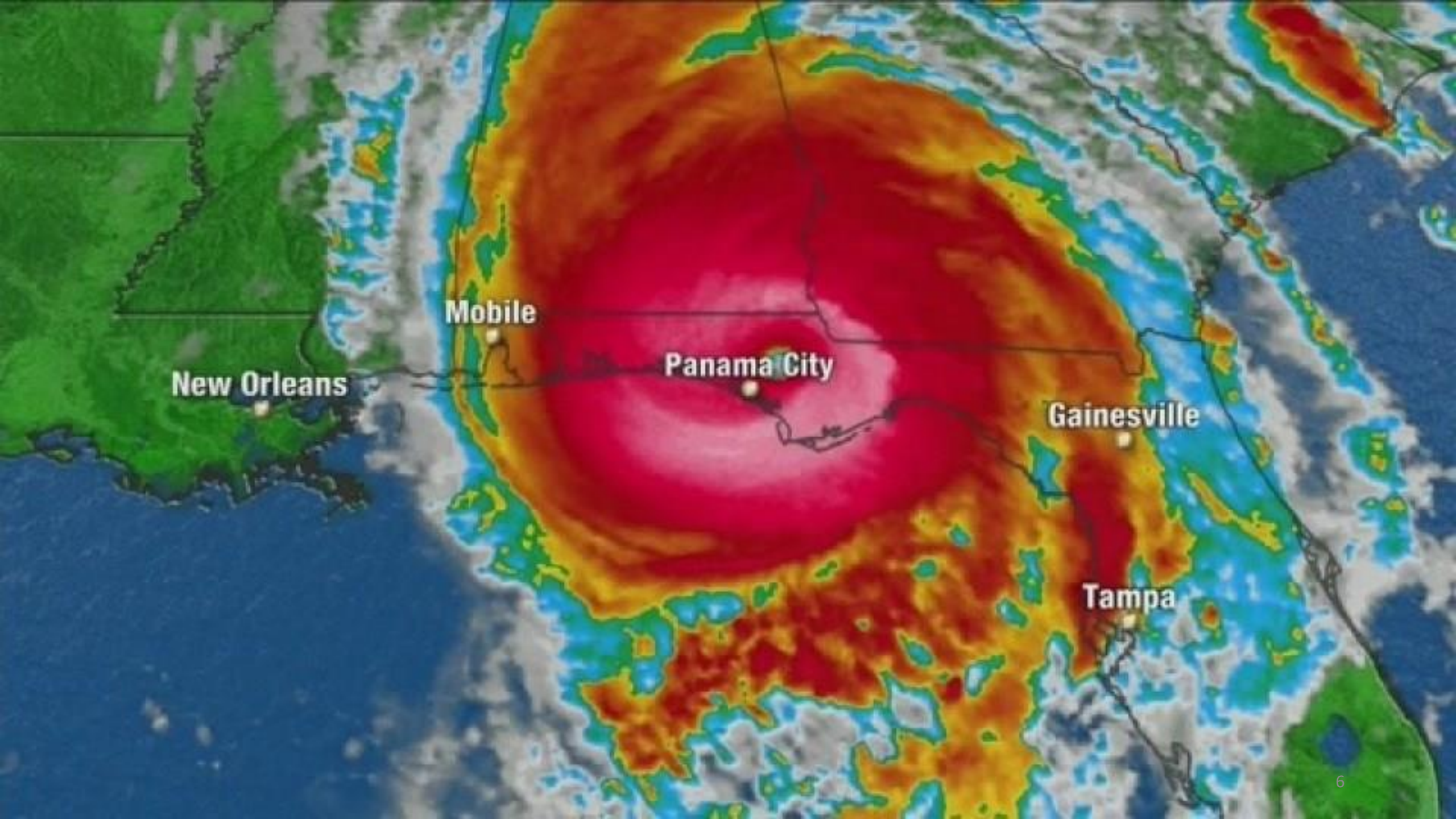


The Approach

72 hours leading up to the
storm making landfall

Where is Panama City?





New Orleans

Mobile

Panama City

Gainesville

Tampa

The Act

Conditions and challenges
during the storm

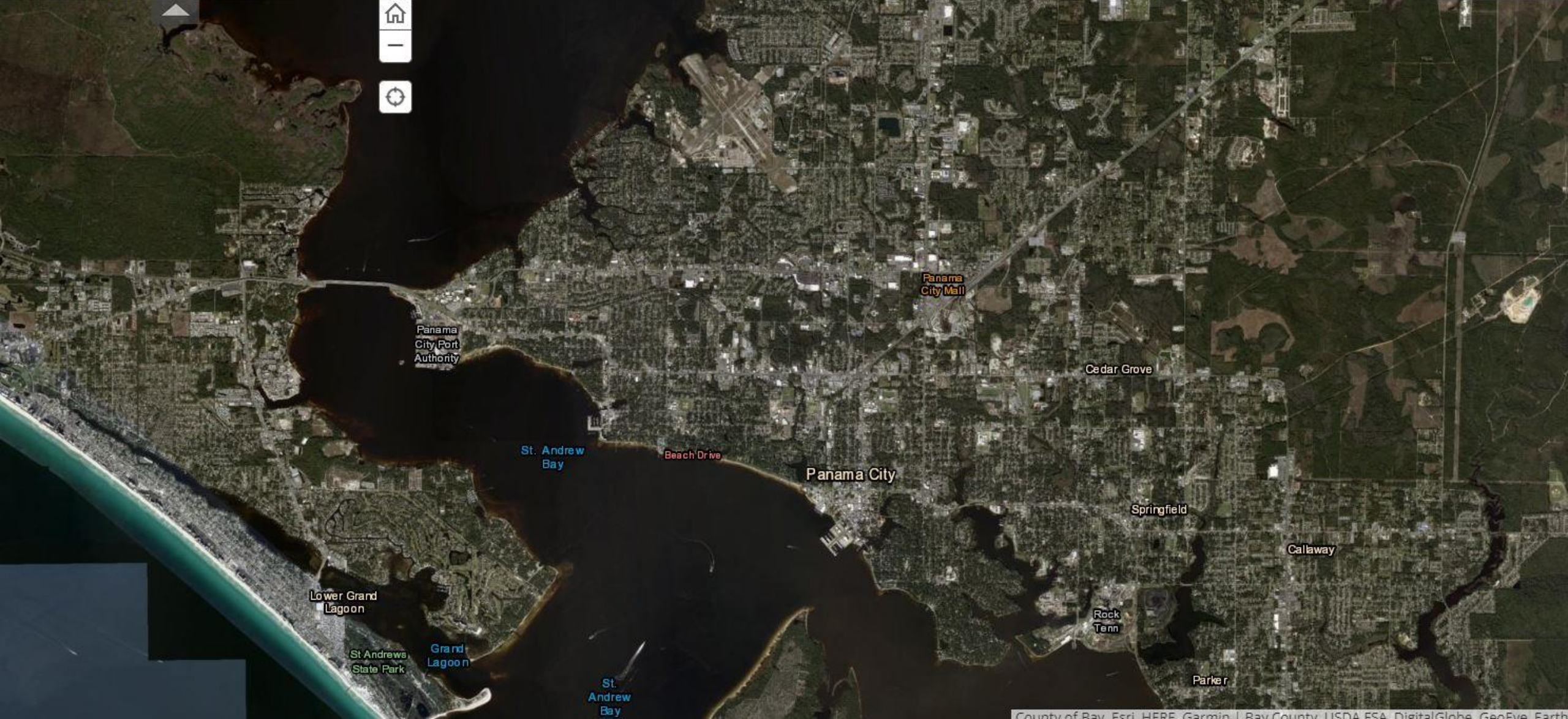
The Aftermath

Immediate challenges and
problem-solving tactics

Hurricane Michael NOAA Imagery Swipe Map

Hurricane Michael NOAA Imagery Map

Data were collected along the coast from Mobile Bay to St. George Island, FL and over Panama City, FL.

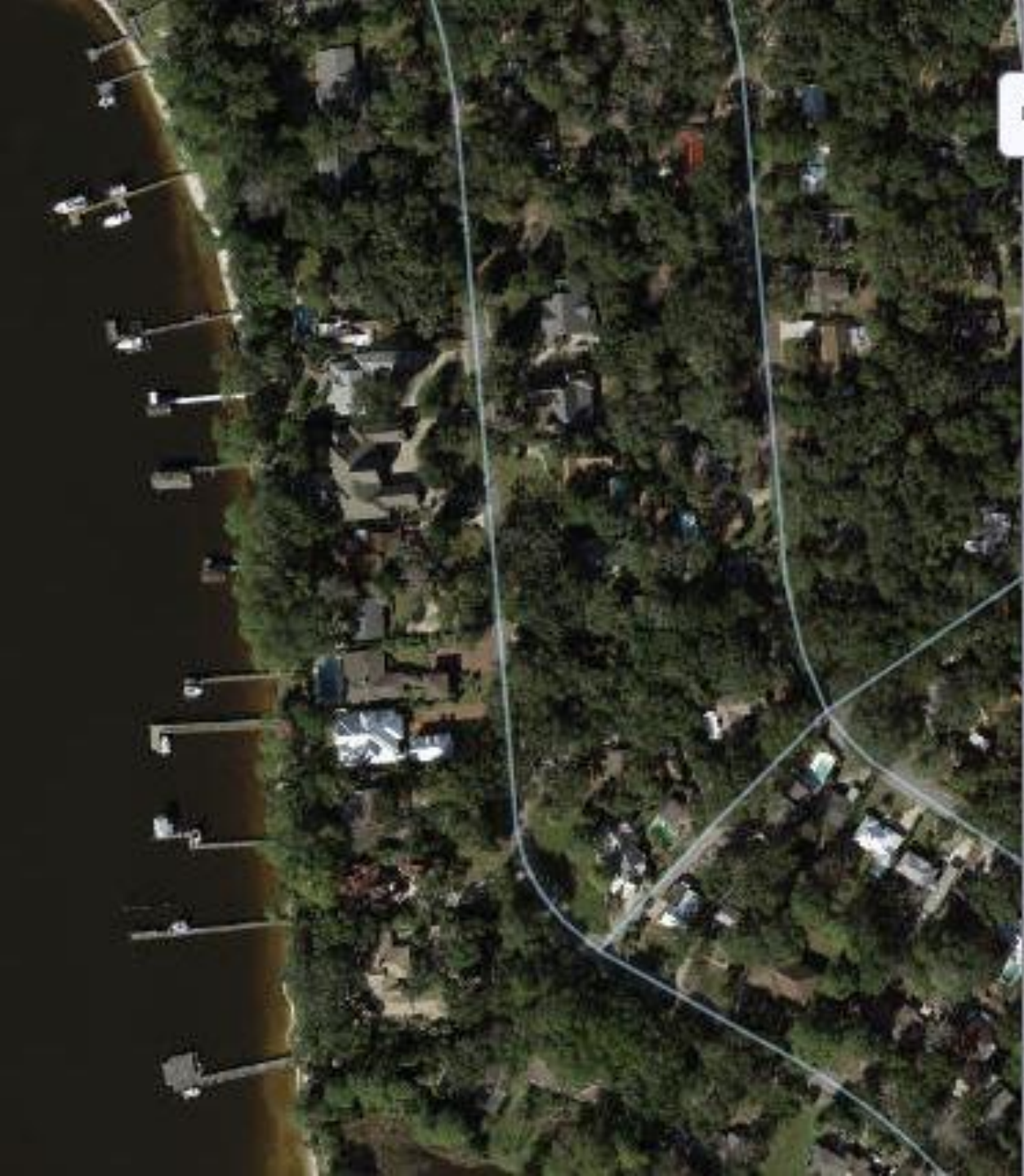


Hurricane Michael NOAA Imagery Swipe Map

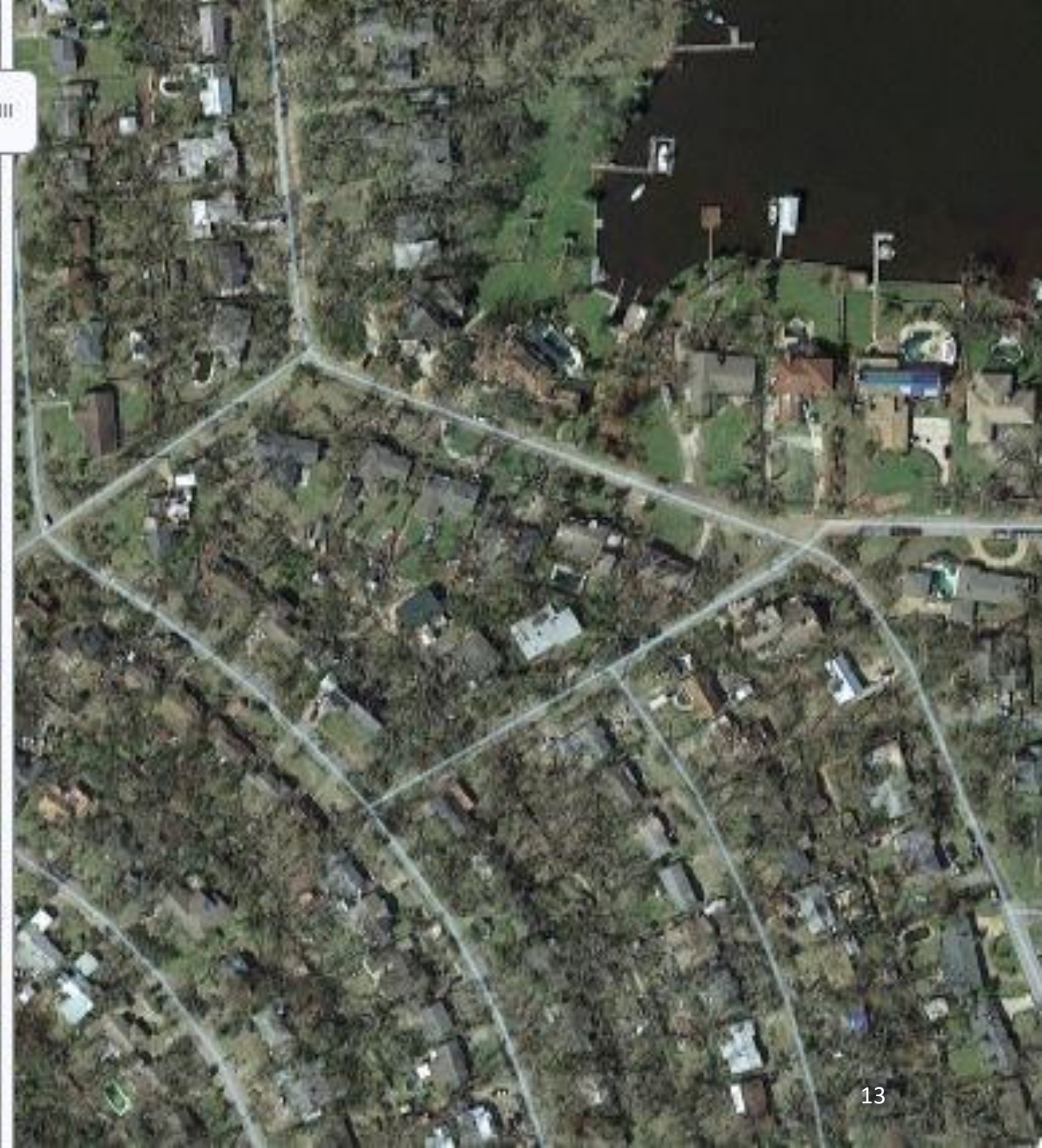
Hurricane Michael NOAA Imagery Map

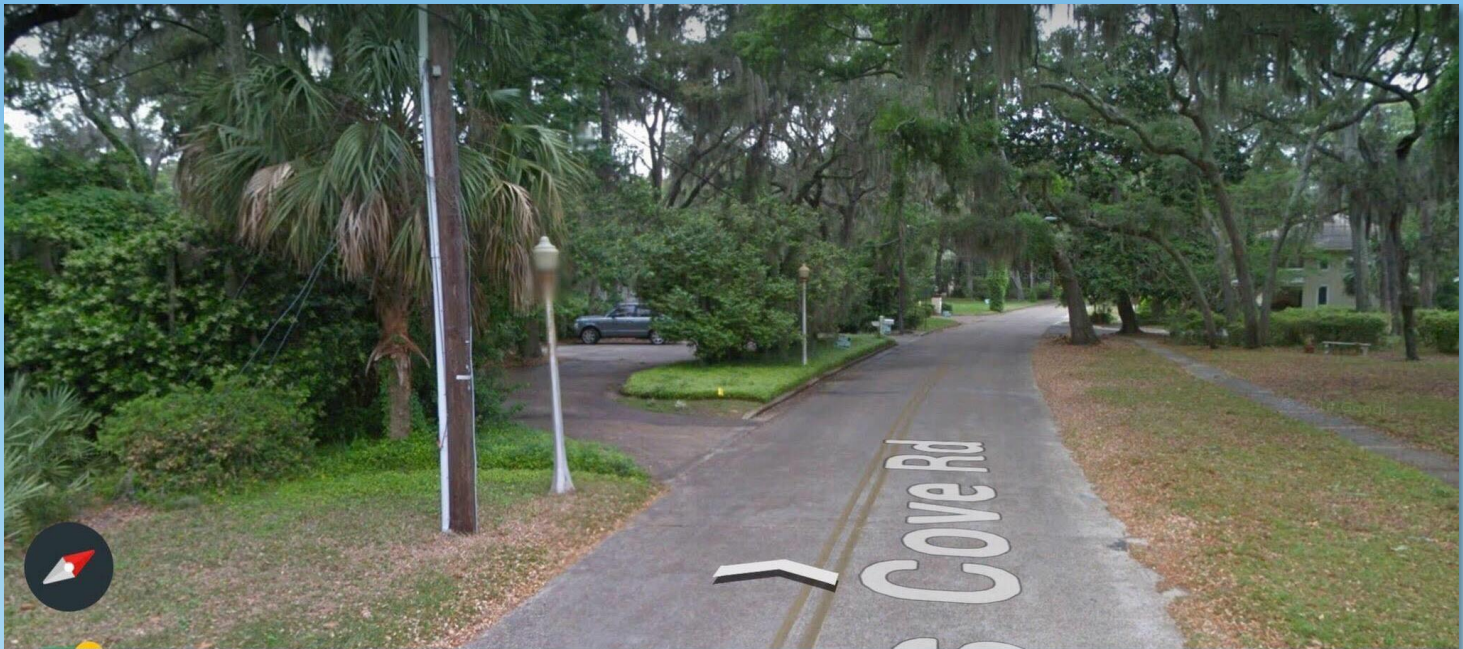
Data were collected along the coast from Mobile Bay to St. George Island, FL and over Panama City, FL.



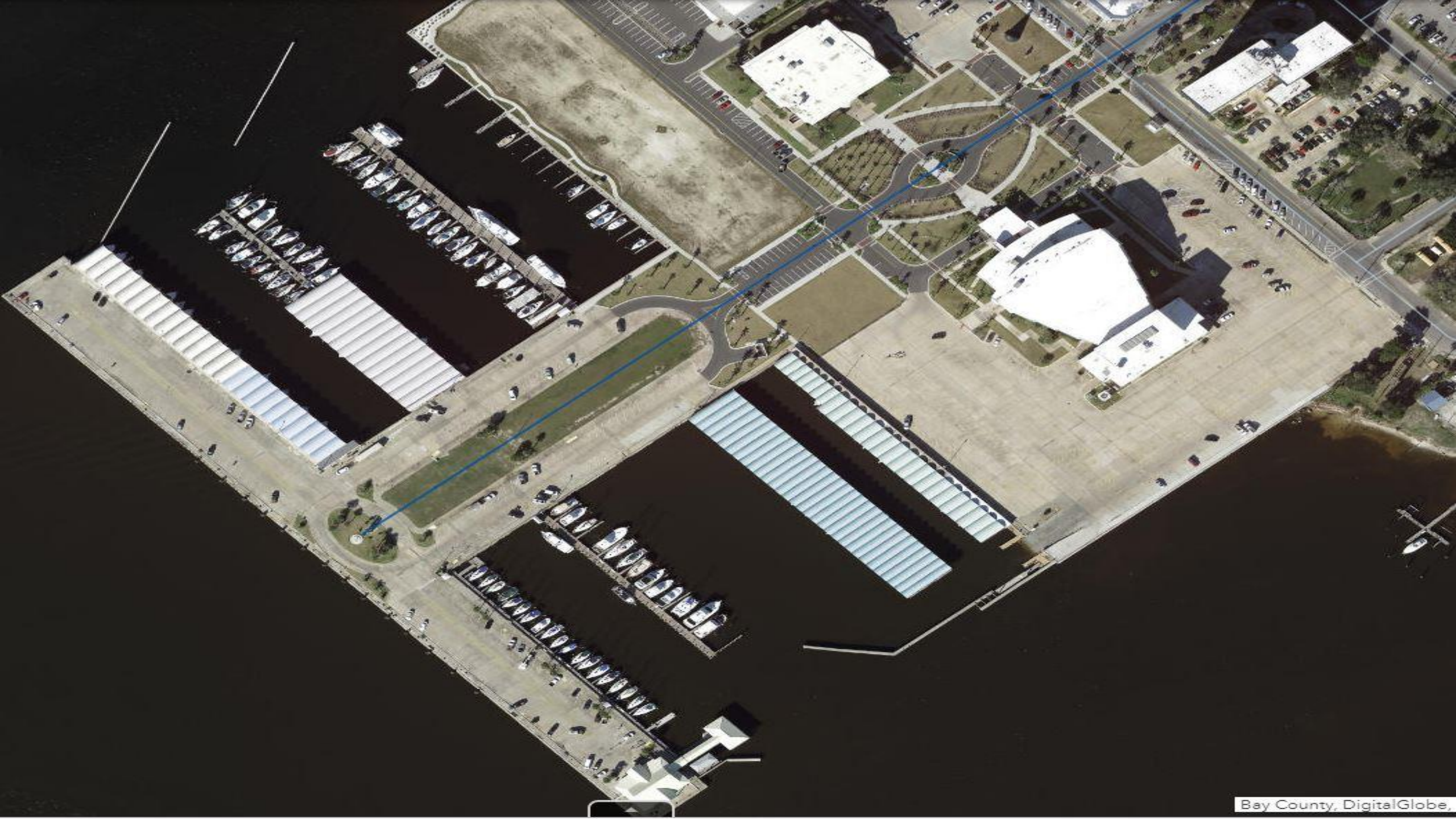


III





Courtesy: Ben Harrison







Watches
www.watches.com











FT MYERS BEACH FL

FL 2143 17

FL 1498 DF



1 2 4 5
~~PLATE 5~~
~~PLATE 5~~





MLK FO

NO LITTERING

MANN'S CAFE

OPEN





Recovery









HAULING AWAY

1143639



**FREE
HOT
LUNCH**





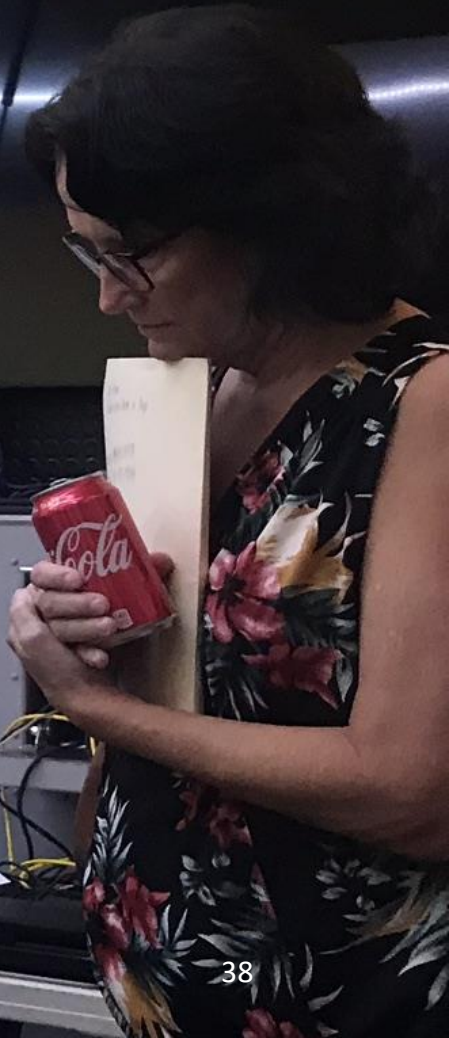
verizo

Community
Action

Satellite Solutions Group

ALL AIT PIONEERS

EDC	LT	ON	SAT	
PCPD	CHIEF	BOB	961	
	CITY	MANAGER	961	
	PATROL	CLERK	961	
PCPD	CHIEF	ALEX	961	
PCPD	DREN	WHITNEY	961	
	CIAO	LINDSEY	961	
	PATROL	CLERK	961	
LHPD	CHIEF	RICHIE	961	
	DC	RAMMO	961	
	PATROL	CLERK	961	
SPD	CHIEF	ROBERT	961	
PPD	CHIEF	HURD	961	
MSD	CHIEF	VEAN	961	
SCSD	TIMMY	FRID	961	
	CHIEF	HEAPE	961	
	MAJ	STANFORD	961	
	CPT	BRANNAN	961	
	LT	BRID	961	
FSVPD	RANDY	CUMS	961	
TECU	EMERGENCY			
SENATOR	GRACE			
LAKE	JOHN			
PHONE	832-0116			
LANE				
	408-4121			







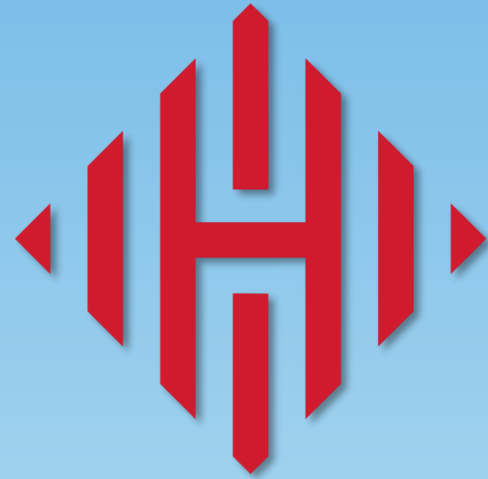


603

RebuildPC

Long Term Planning Project (LTRP)

- Four lines of effort
 - Safety and Security
 - Key and Vital Infrastructure
 - Economy
 - Quality of Life



HAGERTY



DK&P

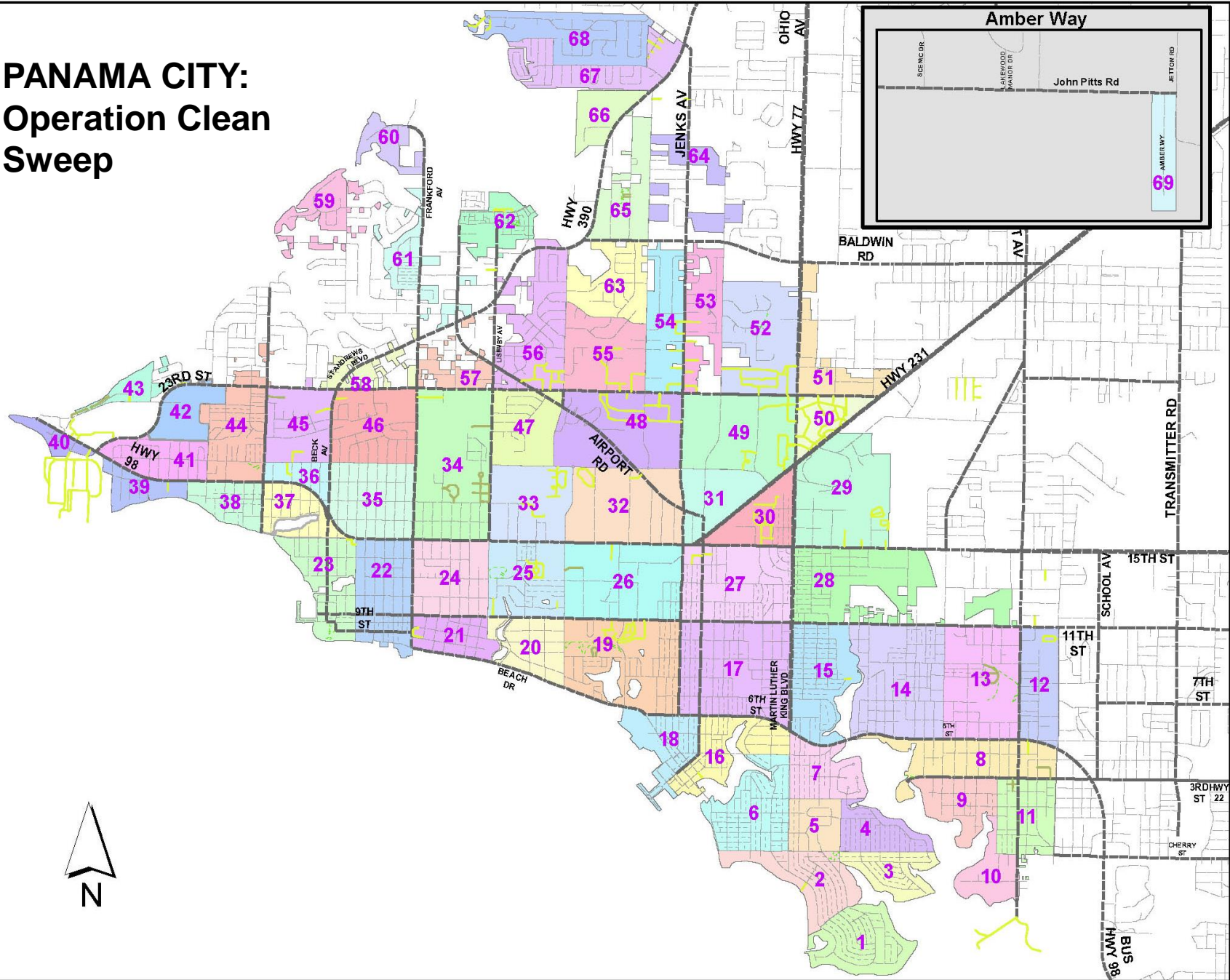
HR&A
Analyze. Advise. Act.

kglobal

Operation Clean Sweep



PANAMA CITY: Operation Clean Sweep



VolunteerPC



**American
Red Cross**



**Habitat
for Humanity**

ReTreePC



Challenges:

- 1. Degraded communications**
- 2. Safety and Security**
- 3. Collapse of key and vital infrastructure**
- 4. Shelter Operations**
- 5. Collapse of medical capability**

Challenges:

- 6. Debris Removal**
- 7. Financial Reserves**
- 8. Federal Bureaucracy**
- 9. Employee Accountability**
- 10. Acute Housing Shortage**

Challenges:

- 11. City Procurement Policies**
- 12. Asset Inventory**
- 13. Storm Water Management**
- 14. Displaced Citizens and Census**
- 15. Devalued properties**

Mark's TOP 10 Advice to City Managers

Mark's TOP 10 Advice to City Managers

10. Pre-negotiated contracts

- **Debris removal**
- **Monitoring Service**
- **Generators (with pigtails) & Pumps**
- **Comfort Stations (full service)**

Mark's TOP 10 Advice to City Managers

9. Redundant Communications:

- Cell
- Social media
- Satellite
- Ham

Mark's TOP 10 Advice to City Managers

- 8. Comprehensive Emergency
Management Training and
Exercises**

Mark's TOP 10 Advice to City Managers

7. Annual asset inventories

Mark's TOP 10 Advice to City Managers

6. Procurement Policies for Declared Emergencies

Mark's TOP 10 Advice to City Managers

- 5. Have your FEMA Consultant
RFQ ready**
 - announce and select early**

Mark's TOP 10 Advice to City Managers

**4. Get your financial house in
order**

Mark's TOP 10 Advice to City Managers

- 3. Cast the vision;
Establish the priorities;
Set the pace for your recovery
efforts**

Mark's TOP 10 Advice to City Managers

**2. Communicate
Communicate
Communicate**

Mark's TOP 10 Advice to City Managers

- 1. Be alert if Jim Cantore and the Weather Channel comes to your City!**

Thank you!

Mark McQueen
City Manager
(850) 872-3010
mmcqueen@pcgov.org

